

MONTHLY MEMBERSHIP PROGRESS REPORT

District 325 D

Results as of: 1/31/2024

GMT:

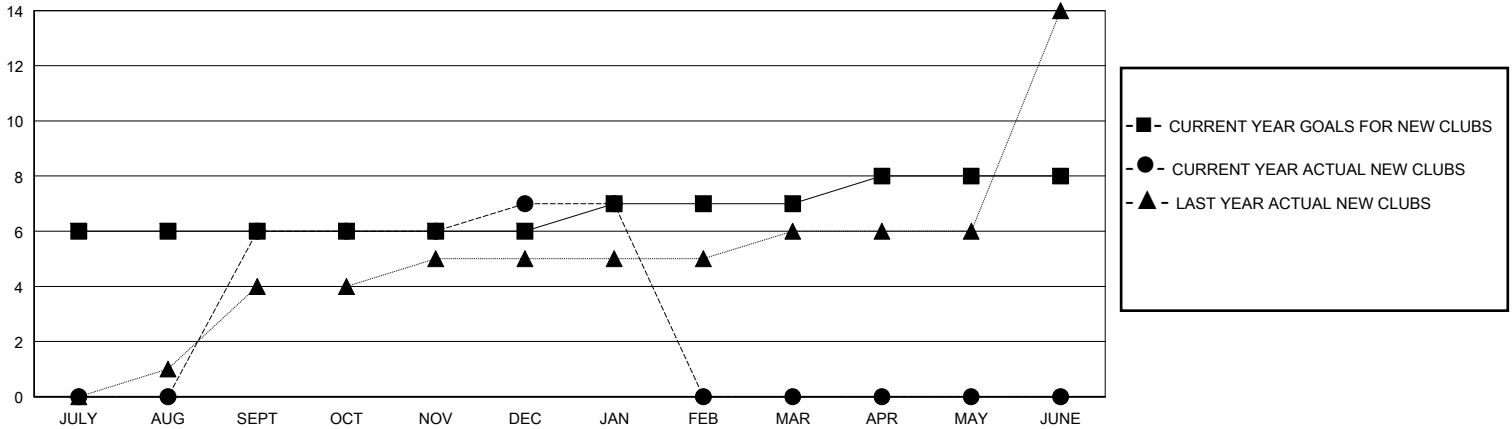
LOCATION NEPAL

GMT CA

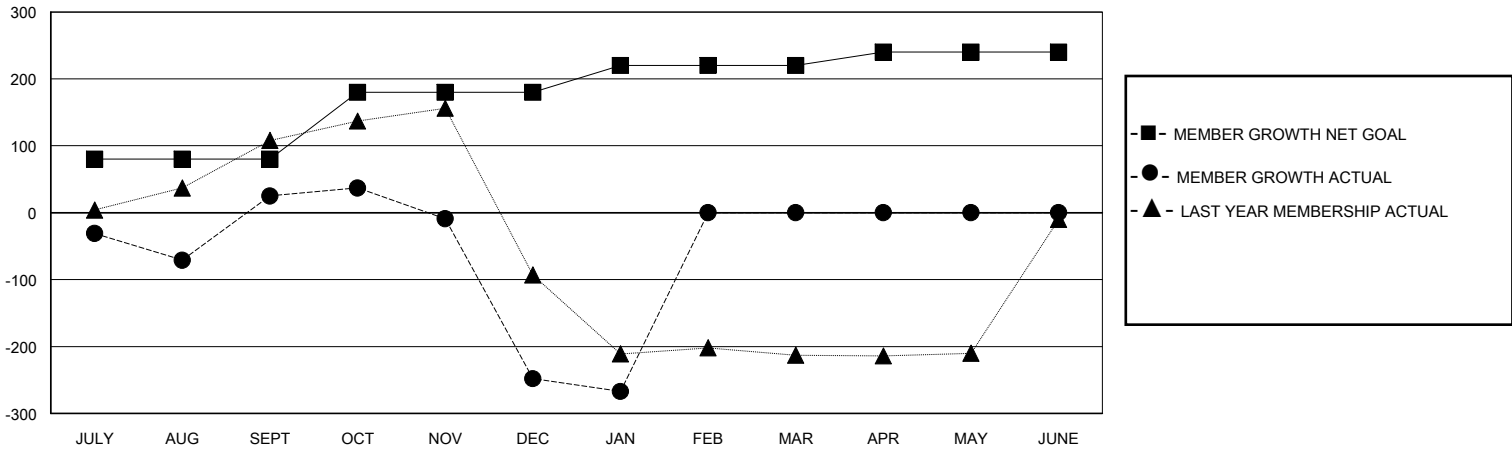
Clubs			
RESULTS FOR 2023-2024			
QUARTER	NEW CLUB GOAL	NEW CLUBS	DROPPED CLUBS
JULY/AUG/SEPT	6	6	5
OCT/NOV/DEC	0	1	4
JAN/FEB/MAR	1	0	2
APR/MAY/JUNE	1	0	0

Members			
RESULTS FOR 2023-2024			
QUARTER	MEMBER GROWTH NET GOAL	MEMBER GROWTH ACTUAL	DROPPED MEMBERS ACTUAL (including transfers)
JULY/AUG/SEPT	80	219	190
OCT/NOV/DEC	100	53	326
JAN/FEB/MAR	40	21	39
APR/MAY/JUNE	20	0	0

GOALS AND ACTUAL NEW CLUBS CUMULATIVE



GOALS AND ACTUAL MEMBERS CUMULATIVE



DROPPED CLUBS: 11	40 CLUBS OF 83 ADDED 1 OR MORE NEW MEMBERS	GENDER DISTRIBUTION	
		MALE 1,282 (68.56%)	FEMALE 589 (31.50%)
DROPPED MEMBERS		CLICK HERE FOR CUMULATIVE MEMBERSHIP DATA	TOTAL FAMILY UNIT MEMBERS 1,284
DECEASED 14	CLUB CANCELLED 228		FAMILY MEMBERS PAYING HALF DUES 862
OTHER 313	TOTAL 555		